

## Crown 480

865983

### POWER FEATURES

- 11.4 kwh stainless steel Dual-Tube™ burner system
- 2.7 kwh powerful side burner
- 4.4 kwh stainless steel rear rotisserie burner
- Premium rotisserie kit included

### COOKING SYSTEM

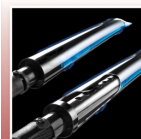
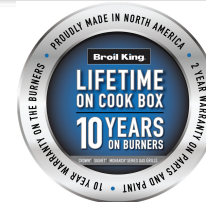
- 4155 sq. cm. total cooking surface including porcelain coated warming rack
- 2864 sq. cm. primary cooking surface
- Flav-R-Cast™ Iron grids
- Stainless steel Flav-R-Wave™ cooking system
- Four stainless steel Dual-Tube™ burners
- Linear Flow valves with 180° precision control
- Deluxe electronic ignition system
- Accu-Temp™ thermometer

### DESIGN AND STYLING

- Black porcelain hood panel with stylish cast aluminium end caps
- Therma-Cast™ aluminium cookbox
- Fold down side shelves with integrated tool hooks
- Black powder coat frame and front panel
- Black powder coat control panel
- Heavy-duty locking swivel casters

### WARRANTY

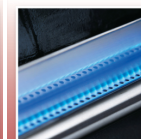
- 25 year warranty on cookbox
- 10 years on stainless steel Dual-Tube™ burner system
- 2 years on remaining parts and paint



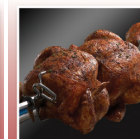
Stainless Steel  
Dual-Tube™  
Burner System



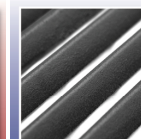
Powerful  
Side Burner



Stainless Steel  
Rear Burner



Premium  
Rotisserie Kit



Flav-R-Cast™  
Iron Grids